

**steelart**<sup>®</sup>  
Modüler Bina Çözümleri  
Modular Building Solutions



## Hafif Çelik Evler

**Sağlam Yapı:** Çelik, gücü ve dayanıklılığıyla bilinir. Hafif çelik evler, zorlu hava koşullarına, depreme ve diğer doğal afetlere geleneksel ahşap yapılara göre daha iyi dayanacak şekilde inşa edilir.

**Hızlı İnşaat:** Çelik çerçeveli evler, geleneksel inşaat yöntemlerine kıyasla nispeten hızlı bir şekilde inşa edilebilir. Prefabrik bileşenler daha hızlı montaja olanak tanır ve inşaat süresini önemli ölçüde azaltır.

**Hafif Yapı:** Hafif olmasına rağmen çelik inanılmaz derecede güçlüdür. Bu özellik, çok sayıda taşıyıcı duvara ihtiyaç duymadan geniş açık alanlara olanak tanıyarak tasarımda esneklik sağlar.

**Enerji Verimliliği:** Çelik, bir evde enerji verimliliğinin artırılmasına katkıda bulunabilecek mükemmel yalıtım özelliklerine sahiptir. Düzgün bir şekilde yalıtılmış çelik yapılar, iç mekan sıcaklıklarının düzenlenmesine yardımcı olarak ısıtma ve soğutma maliyetlerini azaltabilir.

**Çevre Dostu:** Çelik geri dönüştürülebilir bir malzemedir. İnşaatta çeliğin kullanılması, yapının yaşam döngüsü sona erdikten sonra geri dönüştürülebilmesi ve atıkları azaltması nedeniyle sürdürülebilirlik çabalarına katkıda bulunabilir.

**Minimum Bakım:** Çelik evler genellikle geleneksel ahşap yapılara kıyasla daha az bakım gerektirir. Termitler gibi zararlılara karşı dayanıklıdır ve çürümeye, bükülmeye veya çatlamaya karşı daha az hassastır.

**Yangına Dayanıklılık:** Çelik, yangının yayılmasına katkıda bulunmaz, çelik çerçeveli evleri ahşap yapılara göre daha yangına dayanıklı hale getirir.

**Tasarım Esnekliği:** Çelik, mimarlara ve ev sahiplerine daha geniş açık alanlar ve yenilikçi düzenler ile benzersiz ve modern tasarımlar yaratma yeteneği sunarak daha fazla tasarım esnekliği sağlar.

**Uzun Ömür:** Çelik, korozyona ve bozulmaya karşı oldukça dayanıklı olup, diğer bazı inşaat malzemelerine göre binanın daha uzun ömürlü olmasını sağlar.

**Uygun Maliyet:** Çelik çerçeveli bir ev inşa etmenin ilk maliyeti geleneksel yapılardan biraz daha yüksek olsa da dayanıklılık, daha az bakım ve potansiyel enerji tasarrufu, onu uzun vadede uygun maliyetli bir seçim haline getirebilir.

**SteelART size yaşanacak güzel bir ev sunuyor...**

## Lightweight steel houses

**Strength and Durability:** Steel is known for its strength and durability. Lightweight steel houses are built to withstand harsh weather conditions, earthquakes, and other natural disasters better than traditional wooden structures.

**Quick Construction:** Steel-framed houses can be constructed relatively quickly compared to traditional building methods. The prefabricated components allow for faster assembly, reducing construction time significantly.

**Lightweight yet Sturdy:** Despite being lightweight, steel is incredibly strong. This characteristic allows for large open spaces without the need for as many load-bearing walls, providing flexibility in design.

**Energy Efficiency:** Steel has excellent insulating properties, which can contribute to improved energy efficiency in a house. Properly insulated steel structures can help regulate indoor temperatures, reducing heating and cooling costs.

**Environmentally Friendly:** Steel is a recyclable material. Using steel in construction can contribute to sustainability efforts as it can be recycled after the structure's life cycle ends, reducing waste.

**Minimal Maintenance:** Steel houses typically require less maintenance compared to traditional wooden structures. They are resistant to pests such as termites and are less susceptible to rotting, warping, or cracking.

**Fire Resistance:** Steel does not contribute to the spread of fire, making steel-framed houses more fire-resistant compared to wooden structures.

**Design Flexibility:** Steel allows for more design flexibility, offering architects and homeowners the ability to create unique and modern designs with larger open spaces and innovative layouts.

**Longevity:** Steel is highly resistant to corrosion and deterioration, providing a longer lifespan for the building compared to some other construction materials.

**Cost-Effective:** While the initial cost of constructing a steel-framed house might be slightly higher than traditional builds, the durability, reduced maintenance, and potential energy savings can make it a cost-effective choice over the long term.

**SteelART offers you lovely home to live...**

# ST1055

1.5F-1BD-1BT-OK-55

1	Porch	Giriş Terası	9.00 m <sup>2</sup>
2	Living & Kitchen	Mutfak & Salon	27.50 m <sup>2</sup>
3	Bathroom	Banyo	3.60 m <sup>2</sup>
4	Bedroom	Yatak Odası	14.50 m <sup>2</sup>

Gross Area  
Brüt Alan  
54.65m<sup>2</sup>

Terrace  
Teras  
9.00m<sup>2</sup>

Total Area  
Toplam Alan  
63.65m<sup>2</sup>



 steelart®

[www.steelartmb.com](http://www.steelartmb.com)



# ST1057

1.5F-2BD-1BT-57

1	Porch	Giriş Holü	4.00 m <sup>2</sup>
2	Living Room	Salon	17.19 m <sup>2</sup>
3	Terrace	Teras	20.52 m <sup>2</sup>
4	Kitchen	Mutfak	4.43 m <sup>2</sup>
5	Bedroom 1	Yatak Odası 1	6.82 m <sup>2</sup>
6	Bathroom	Banyo	5.55 m <sup>2</sup>
7	Bedroom 2	Yatak Odası 2	11.50 m <sup>2</sup>

Gross Area  
Brüt Alan  
56.77m<sup>2</sup>

Terrace  
Teras  
20.52m<sup>2</sup>

Total Area  
Toplam Alan  
77.29m<sup>2</sup>

 **steelart**<sup>®</sup>  
www.steelartmb.com



# ST1058

1F-1BD-1BT-58

1	Hall	Salon	32.00m <sup>2</sup>
2	Meeting Room	Toplantı O.	9.20m <sup>2</sup>
3	Kitchen	Mutfak	5.60m <sup>2</sup>
4	WC	WC	3.00m <sup>2</sup>

Gross Area  
Brüt Alan  
58.04m<sup>2</sup>

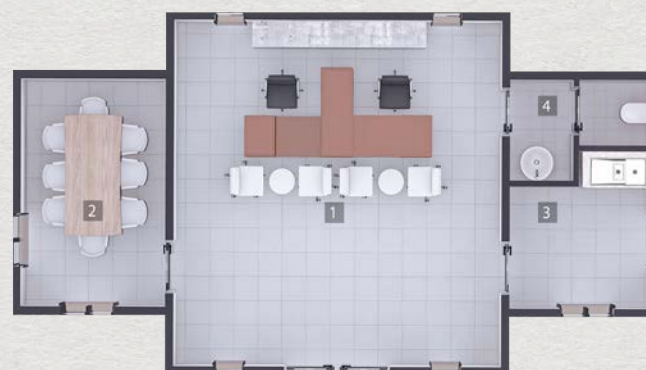
Terrace  
Teras  
-m<sup>2</sup>

Total Area  
Toplam Alan  
58.04m<sup>2</sup>



 steelart®

[www.steelartmb.com](http://www.steelartmb.com)



# ST1062

1F-2BD-1BT-OK-62

1	Porch	Giriş Terası	3.30m <sup>2</sup>
2	Entrance	Giriş Holü	2.80m <sup>2</sup>
3	Living Room & Kitchen	Salon & Mutfak	27.70m <sup>2</sup>
4	Hall	Hol	2.30m <sup>2</sup>
5	Bedroom 1	Yatak Odası 1	9.20m <sup>2</sup>
6	Bathroom	Banyo	4.50m <sup>2</sup>
7	Bedroom 2	Yatak Odası 2	11.50m <sup>2</sup>

Gross Area  
Brüt Alan  
62.25m<sup>2</sup>

Terrace  
Teras  
3.30m<sup>2</sup>

Total Area  
Toplam Alan  
65.55m<sup>2</sup>

 steelart®

[www.steelartmb.com](http://www.steelartmb.com)



# ST1080

1F-1BD-1BT-80

1	Porch	Giriş Terası	7.40m <sup>2</sup>
2	Hall	Hol	8.05m <sup>2</sup>
3	Kitchen	Mutfak	4.60m <sup>2</sup>
4	Meeting Room	Toplantı Salonu	55.80m <sup>2</sup>
5	Woman WC	Bayan WC	2.20m <sup>2</sup>
6	Man WC	Bay WC	2.20m <sup>2</sup>

Gross Area  
Brüt Alan  
80.00m<sup>2</sup>

Terrace  
Teras  
7.40m<sup>2</sup>

Total Area  
Toplam Alan  
87.40m<sup>2</sup>



 steelart®

[www.steelartmb.com](http://www.steelartmb.com)



# ST1084

1F-2BD-1BT-OK-84

1	Porch	Giriş Terası	13.00 m <sup>2</sup>
2	Living Room	Salon	21.00 m <sup>2</sup>
3	Kitchen	Mutfak	17.74 m <sup>2</sup>
4	Hall	Hol	2.44 m <sup>2</sup>
5	Bedroom1	Yatak Odası 1	16.15 m <sup>2</sup>
6	Bathroom	Banyo	6.54 m <sup>2</sup>
7	Bedroom2	Yatak Odası 2	12.97 m <sup>2</sup>

Gross Area  
Brüt Alan  
83.89m<sup>2</sup>

Terrace  
Teras  
13.00m<sup>2</sup>

Total Area  
Toplam Alan  
96.89m<sup>2</sup>

 steelart®

[www.steelartmb.com](http://www.steelartmb.com)





# ST1089

1F-2BD-1BT-89

1	Porch	Giriş Terası	13.00 m <sup>2</sup>
2	Living Room	Salon	21.00 m <sup>2</sup>
3	Kitchen	Mutfak	17.74 m <sup>2</sup>
4	Hall	Hol	2.44 m <sup>2</sup>
5	Bedroom1	Yatak Odası 1	16.15 m <sup>2</sup>
6	Bathroom	Banyo	6.54 m <sup>2</sup>
7	Bedroom2	Yatak Odası 2	12.97 m <sup>2</sup>

Gross Area  
Brüt Alan  
89.42m<sup>2</sup>

Terrace  
Teras  
3.60m<sup>2</sup>

Total Area  
Toplam Alan  
93.02m<sup>2</sup>



 steelart®

[www.steelartmb.com](http://www.steelartmb.com)



# ST1105

1F-3BD-2BT-105

1	Porch	Giriş Terası	17.36 m <sup>2</sup>
2	Entrance	Giriş Holü	4.95 m <sup>2</sup>
3	Bathroom 1	Banyo 1	4.48 m <sup>2</sup>
4	Bedroom 1	Yatak Odası 1	13.62 m <sup>2</sup>
5	Bathroom 2	Banyo 2	5.63 m <sup>2</sup>
6	Bedroom 2	Yatak Odası 2	13.20 m <sup>2</sup>
7	Bedroom 3	Yatak Odası 3	13.60 m <sup>2</sup>
8	Terrace	Teras	36.69 m <sup>2</sup>
9	Living Room	Salon	20.18 m <sup>2</sup>
10	Kitchen	Mutfak	10.17 m <sup>2</sup>
11	WC	WC	2.33 m <sup>2</sup>
12	Hall	Hol	6.31 m <sup>2</sup>

Gross Area  
Brüt Alan  
105.00m<sup>2</sup>

Terrace  
Teras  
43.10m<sup>2</sup>

Total Area  
Toplam Alan  
148.10m<sup>2</sup>

 steelart®

[www.steelartmb.com](http://www.steelartmb.com)



# ST1106

1F-3BD-2BT-OK-106

1	Porch	Giriş Terası	16.40m <sup>2</sup>
2	Kitchen & Living Room	Mutfak & Salon	44.26m <sup>2</sup>
3	Hall	Hol	3.70m <sup>2</sup>
4	Bathroom 1	Banyo 1	5.25m <sup>2</sup>
5	M. Bedroom	Ebv.Yatak O.	15.40m <sup>2</sup>
6	Bathroom 2	Banyo 2	4.40m <sup>2</sup>
7	Bedroom 2	Yatak Odası 2	12.90m <sup>2</sup>
8	Bedroom 3	Yatak Odası 3	9.00m <sup>2</sup>

Gross Area  
Brüt Alan  
105.40m<sup>2</sup>

Terrace  
Teras  
16.40m<sup>2</sup>

Total Area  
Toplam Alan  
121.80m<sup>2</sup>



 steelart®

[www.steelartmb.com](http://www.steelartmb.com)



# ST1107

1F-3BD-2BT-OK-107

1	Porch	Giriş Terası	4.80 m <sup>2</sup>
2	Entrance	Giriş Holü	6.40 m <sup>2</sup>
3	Bedroom 1	Yatak Odası 1	12.60 m <sup>2</sup>
4	Kitchen & Living Room	Mutfak&Salon	36.25 m <sup>2</sup>
5	Terrace	Teras	9.20 m <sup>2</sup>
6	Corridor	Koridor	5.50 m <sup>2</sup>
7	M.Bedroom	Ebv. Yatak O.	14.60 m <sup>2</sup>
8	M.Bathroom	Ebv.Banyo	4.80 m <sup>2</sup>
9	Bedroom 3	Yatak Odası 3	11.20 m <sup>2</sup>
10	Bathroom 2	Banyo 2	5.15 m <sup>2</sup>

Gross Area  
Brüt Alan  
107.00m<sup>2</sup>

Terrace  
Teras  
14.00m<sup>2</sup>

Total Area  
Toplam Alan  
121.00m<sup>2</sup>

 **steelart**<sup>®</sup>  
www.steelartmb.com



# ST1108i

1F-3BD-2BT-108i

1	Porch	Giriş Terası	4.55 m <sup>2</sup>
2	Entrance	Giriş Holü	5.20 m <sup>2</sup>
3	Living Room	Salon	30.15 m <sup>2</sup>
4	Terrace	Teras	11.25 m <sup>2</sup>
5	M.Bathroom	Ebv.Banyo	4.05 m <sup>2</sup>
6	M.Bedroom	Ebv. Yatak O.	14.30 m <sup>2</sup>
7	Bedroom 2	Yatak Odası 2	10.20 m <sup>2</sup>
8	Bedroom 3	Yatak Odası 3	11.00 m <sup>2</sup>
9	Bathroom 2	Banyo 2	6.05 m <sup>2</sup>
10	Corridor	Koridor	5.45 m <sup>2</sup>
11	Kitchen	Mutfak	10.65 m <sup>2</sup>

Gross Area  
Brüt Alan  
108.10m<sup>2</sup>

Terrace  
Teras  
15.80m<sup>2</sup>

Total Area  
Toplam Alan  
123.90m<sup>2</sup>



 **steelart**<sup>®</sup>  
[www.steelartmb.com](http://www.steelartmb.com)



# ST1108c

1F-3BD-2BT-108c

1	Porch	Giriş Terası	4.55 m <sup>2</sup>
2	Entrance	Giriş Holü	5.20 m <sup>2</sup>
3	Living Room	Salon	30.15 m <sup>2</sup>
4	Terrace	Teras	11.25 m <sup>2</sup>
5	M.Bathroom	Ebv.Banyo	4.05 m <sup>2</sup>
6	M.Bedroom	Ebv. Yatak O.	14.30 m <sup>2</sup>
7	Bedroom 2	Yatak Odası 2	10.20 m <sup>2</sup>
8	Bedroom 3	Yatak Odası 3	11.00 m <sup>2</sup>
9	Bathroom 2	Banyo 2	6.05 m <sup>2</sup>
10	Corridor	Koridor	5.45 m <sup>2</sup>
11	Kitchen	Mutfak	10.65 m <sup>2</sup>

Gross Area  
Brüt Alan  
108.10m<sup>2</sup>

Terrace  
Teras  
15.80m<sup>2</sup>

Total Area  
Toplam Alan  
123.90m<sup>2</sup>



 steelart®  
[www.steelartmb.com](http://www.steelartmb.com)



# ST1111

1F-3BD-2BT-111

1	Porch	Giriş Terası	4.70 m <sup>2</sup>
2	Entrance	Giriş Holü	6.60 m <sup>2</sup>
3	Living Room	Salon	29.85 m <sup>2</sup>
4	Kitchen	Mutfak	10.75 m <sup>2</sup>
5	Terrace	Teras	9.50 m <sup>2</sup>
6	M.Bedroom	Ebv. Yatak O.	14.00 m <sup>2</sup>
7	M.Bathroom	Ebv.Banyo	4.25 m <sup>2</sup>
8	Bedroom 2	Yatak Odası 2	10.35 m <sup>2</sup>
9	Bathroom 2	Banyo 2	3.90 m <sup>2</sup>
10	Bedroom 3	Yatak Odası 3	10.90 m <sup>2</sup>
11	Laundry	Çamaşılık	2.10 m <sup>2</sup>
12	Corridor	Koridor	6.70 m <sup>2</sup>

Gross Area  
Brüt Alan  
111.00m<sup>2</sup>

Terrace  
Teras  
14.20m<sup>2</sup>

Total Area  
Toplam Alan  
125.20m<sup>2</sup>



 steelart®

[www.steelartmb.com](http://www.steelartmb.com)



# ST1114

1F-3BD-2BT-114

1	Porch	Giriş Terası	4.50 m <sup>2</sup>
2	Entrance	Giriş Holü	7.10 m <sup>2</sup>
3	Living Room	Salon	29.85 m <sup>2</sup>
4	Kitchen	Mutfak	10.00 m <sup>2</sup>
5	Terrace	Teras	22.15 m <sup>2</sup>
6	M.Bathroom	Ebv.Banyo	4.10 m <sup>2</sup>
7	M.Bedroom	Ebv. Yatak O.	17.80 m <sup>2</sup>
8	Bedroom 2	Yatak Odası 2	10.20 m <sup>2</sup>
9	Bedroom 3	Yatak Odası 3	11.00 m <sup>2</sup>
10	Hall	Hol	7.20 m <sup>2</sup>
11	Bathroom 2	Banyo 2	5.30 m <sup>2</sup>

Gross Area  
Brüt Alan  
114.40m<sup>2</sup>

Terrace  
Teras  
26.65m<sup>2</sup>

Total Area  
Toplam Alan  
141.05m<sup>2</sup>

 steelart®

[www.steelartmb.com](http://www.steelartmb.com)





# ST1118

1F-3BD-2BT-OK-118

1	Porch	Giriş Terası	2.70 m <sup>2</sup>
2	Hall	Hol	13.55 m <sup>2</sup>
3	Bathroom 1	Banyo 1	4.90 m <sup>2</sup>
4	Storage	Kiler	7.55 m <sup>2</sup>
5	Kitchen & Living Room	Mutfak & Salon	38.55 m <sup>2</sup>
6	Terrace	Teras	10.80 m <sup>2</sup>
7	M.Bedroom	Ebv.Yatak O.	14.56 m <sup>2</sup>
8	M.Bathroom	Ebv.Banyo	4.75 m <sup>2</sup>
9	Bedroom 2	Yatak Odası 2	10.75 m <sup>2</sup>
10	Bedroom 3	Yatak Odası 3	10.00 m <sup>2</sup>

Gross Area  
Brüt Alan  
117.92m<sup>2</sup>

Terrace  
Teras  
13.50m<sup>2</sup>

Total Area  
Toplam Alan  
131.42m<sup>2</sup>



 steelart®

[www.steelartmb.com](http://www.steelartmb.com)



# ST1126

1F-3BD-2BT-OK-126

1	Porch	Giriş Terası	8.40m <sup>2</sup>
2	Entrance	Giriş Holü	6.60m <sup>2</sup>
3	Storage	Kiler	2.40m <sup>2</sup>
4	Kitchen & Living Room	Mutfak & Salon	42.50m <sup>2</sup>
5	Bedroom 1	Yatak Odası 1	14.00m <sup>2</sup>
6	Bathroom 1	Banyo 1	4.50m <sup>2</sup>
7	Bedroom 2	Yatak Odası 2	12.15m <sup>2</sup>
8	Hall	Hol	8.70m <sup>2</sup>
9	Bedroom 3	Yatak Odası 3	12.15m <sup>2</sup>
10	Bathroom 2	Banyo 2	4.50m <sup>2</sup>
11	Bathroom 3	Banyo 3	5.20m <sup>2</sup>
12	Terrace	Teras	24.20m <sup>2</sup>
13	Terrace	Teras	8.40m <sup>2</sup>

Gross Area  
Brüt Alan  
126.30m<sup>2</sup>

Terrace  
Teras  
41.00m<sup>2</sup>

Total Area  
Toplam Alan  
168.50m<sup>2</sup>

 steelart®

[www.steelartmb.com](http://www.steelartmb.com)



# ST1132

1F-4BD-2BT-OK-132

1	Porch	Giriş Terası	2,56 m <sup>2</sup>
2	Entrance	Giriş Holü	5,23 m <sup>2</sup>
3	Living Room	Salon	20,90 m <sup>2</sup>
4	Terrace	Teras	20,85 m <sup>2</sup>
5	Kitchen	Mutfak	17,76 m <sup>2</sup>
6	Bedroom 2	Yatak Odası 2	10,19 m <sup>2</sup>
7	Bedroom 3	Yatak Odası 3	10,19 m <sup>2</sup>
8	Bedroom 4	Yatak Odası 4	10,19 m <sup>2</sup>
9	Hall	Hol	11,51 m <sup>2</sup>
10	M. Bedroom	Ebv.Yatak O.	16,91 m <sup>2</sup>
11	Dressing R.	Giysi odası	4,02 m <sup>2</sup>
12	M.Bathroom	Ebv. Banyo	4,02 m <sup>2</sup>
13	Laundry	Çamaşır O.	5,18 m <sup>2</sup>
14	Bathroom 2	Banyo 2	5,18 m <sup>2</sup>
15	Terrace	Teras	13,24 m <sup>2</sup>

Gross Area  
Brüt Alan  
131.97m<sup>2</sup>

Terrace  
Teras  
34.09m<sup>2</sup>

Total Area  
Toplam Alan  
166.06m<sup>2</sup>



 steelart®

[www.steelartmb.com](http://www.steelartmb.com)



# ST1136

1F-4BD-2BT-OK-136

1	Porch	Giriş Terası	3.00 m <sup>2</sup>
2	Living	Salon	30.00 m <sup>2</sup>
3	Kitchen	Mutfak	17.50 m <sup>2</sup>
4	WC	WC	1.50 m <sup>2</sup>
5	Storage	Depo	2.70 m <sup>2</sup>
6	Study Room	Çalışma Odası	9.20 m <sup>2</sup>
7	Bedroom 1	Yatak Odası 1	9.60 m <sup>2</sup>
8	Bathroom	Banyo	4.00 m <sup>2</sup>
9	Bedroom 2	Yatak Odası 2	9.60 m <sup>2</sup>
10	Bedroom 3	Yatak Odası 3	9.20 m <sup>2</sup>
11	Hall	Hol	5.40 m <sup>2</sup>
12	Garage	Kapalı Garaj	21.80 m <sup>2</sup>
13	Terrace	Teras	15.70 m <sup>2</sup>

Gross Area  
Brüt Alan  
135.70m<sup>2</sup>

Terrace  
Teras  
15.70m<sup>2</sup>

Total Area  
Toplam Alan  
151.40m<sup>2</sup>

 steelart®

[www.steelartmb.com](http://www.steelartmb.com)



# ST1140

1F-3BD-2BT-140

1	Porch	Giriş Terası	4.21 m <sup>2</sup>
2	Entrance	Giriş Holü	5.89 m <sup>2</sup>
3	Bathroom 1	Banyo 1	4.77 m <sup>2</sup>
4	Bedroom 1	Yatak Odası 1	15.65 m <sup>2</sup>
5	Hall	Hol	7.60 m <sup>2</sup>
6	Bathroom 2	Banyo 2	6.69 m <sup>2</sup>
7	Bedroom 2	Yatak Odası 2	19.31 m <sup>2</sup>
8	Living Room	Salon	37.10 m <sup>2</sup>
9	Terrace	Teras	15.54 m <sup>2</sup>
10	Kitchen	Mutfak	14.00 m <sup>2</sup>
11	Bedroom 3	Yatak Odası 3	14.23 m <sup>2</sup>

Gross Area  
Brüt Alan  
140.47m<sup>2</sup>

Terrace  
Teras  
15.54m<sup>2</sup>

Total Area  
Toplam Alan  
156.01m<sup>2</sup>



 steelart®

[www.steelartmb.com](http://www.steelartmb.com)



# ST2112

2F-3BD-2BT-OK-112

1	Porch	Giriş Terası	3.00 m <sup>2</sup>
2	Entrance	Giriş Holü	8.15 m <sup>2</sup>
3	Living Room	Salon	35.10 m <sup>2</sup>
4	Laundry	Çamaşır O.	2.43 m <sup>2</sup>
5	Bathroom 2	Banyo 2	3.78 m <sup>2</sup>
6	Bedroom 2	Yatak Odası 2	10.53 m <sup>2</sup>
7	Bedroom 3	Yatak Odası 3	14.55 m <sup>2</sup>
8	Terrace	Teras	24.50 m <sup>2</sup>
9	Stair	Merdiven	7.50 m <sup>2</sup>
10	Hol	Hall	6.20 m <sup>2</sup>
11	M.Bedroom	Ebv.Yatak O.	19.27 m <sup>2</sup>
12	M.Bathroom	Ebv.Banyo	3.78 m <sup>2</sup>
13	Dressing R.	Giyinme O.	6.24 m <sup>2</sup>
14	Terrace	Teras	35.10 m <sup>2</sup>

Gross Area  
Brüt Alan  
111.62m<sup>2</sup>

Terrace  
Teras  
59.60m<sup>2</sup>

Total Area  
Toplam Alan  
171.22m<sup>2</sup>

 steelart®

[www.steelartmb.com](http://www.steelartmb.com)



# ST2120

2F-3BD-3BT-OK-120

1	Porch	Giriş Terası	2.33 m <sup>2</sup>
2	Entrance	Giriş Holü	5.32 m <sup>2</sup>
3	Bedroom 2	Yatak Odası 2	8.50 m <sup>2</sup>
4	Kitchen & Living Room	Mutfak & Salon	31.90 m <sup>2</sup>
5	Terrace	Teras	14.80 m <sup>2</sup>
6	Bathroom 2	Banyo 2	3.50 m <sup>2</sup>
7	Stair	Merdiven	5.88 m <sup>2</sup>
8	Hall	Hol	3.81 m <sup>2</sup>
9	Bedroom 3	Yatak Odası 3	15.40 m <sup>2</sup>
10	M.Bedroom	Ebv.Yatak O.	16.06 m <sup>2</sup>
11	Balcony	Balkon	3.40 m <sup>2</sup>
12	Bathroom 3	Banyo 3	4.08 m <sup>2</sup>
13	M.Bathroom	Banyo	4.32 m <sup>2</sup>

Gross Area  
Brüt Alan  
119.80m<sup>2</sup>

Terrace  
Teras  
14.80m<sup>2</sup>

Total Area  
Toplam Alan  
134.60m<sup>2</sup>



 steelart®

[www.steelartmb.com](http://www.steelartmb.com)



# ST2127

2F-2BD-2BT-OK-127

1	Porch	Giriş Terası	3.29 m <sup>2</sup>
2	Entrance	Giriş Holü	4.00 m <sup>2</sup>
3	WC	WC	3.61 m <sup>2</sup>
4	Kitchen	Mutfak	17.94 m <sup>2</sup>
5	Stair	Merdiven	4.00 m <sup>2</sup>
6	Living Room	Salon	27.96 m <sup>2</sup>
7	Terrace	Teras	13.18 m <sup>2</sup>
8	Balcony	Balkon	6.59 m <sup>2</sup>
9	Bedroom 1	Yatak Odası 1	19.22 m <sup>2</sup>
10	Hall	Hol	3.96 m <sup>2</sup>
11	Bedroom 2	Yatak Odası 2	12.94 m <sup>2</sup>
12	Bathroom 1	Banyo 1	4.40 m <sup>2</sup>
13	Bathroom 2	Banyo 2	4.34 m <sup>2</sup>

Gross Area  
Brüt Alan  
126.78m<sup>2</sup>

Terrace  
Teras  
13.18m<sup>2</sup>

Total Area  
Toplam Alan  
139.96m<sup>2</sup>

 steelart®

[www.steelartmb.com](http://www.steelartmb.com)







# ST2130

2F-3BD-2BT-OK-130

1	Entrance	Giriş Holü	10,27 m <sup>2</sup>
2	Bathroom 1	Banyo 1	3,15 m <sup>2</sup>
3	Kitchen	Mutfak	13,62 m <sup>2</sup>
4	Living Room	Salon	19,00 m <sup>2</sup>
5	Terrace	Teras	16,50 m <sup>2</sup>
6	Warehouse	Depo	2,80 m <sup>2</sup>
7	Hall	Hol	7,00 m <sup>2</sup>
8	Bathroom 2	Banyo 2	6,15 m <sup>2</sup>
9	Bedroom 2	Yatak Odası 2	14,17 m <sup>2</sup>
10	M. Bedroom	Ebv. Yatak O.	18,25 m <sup>2</sup>
11	Bedroom 3	Yatak Odası 3	15,41 m <sup>2</sup>

Gross Area  
Brüt Alan  
130.00m<sup>2</sup>

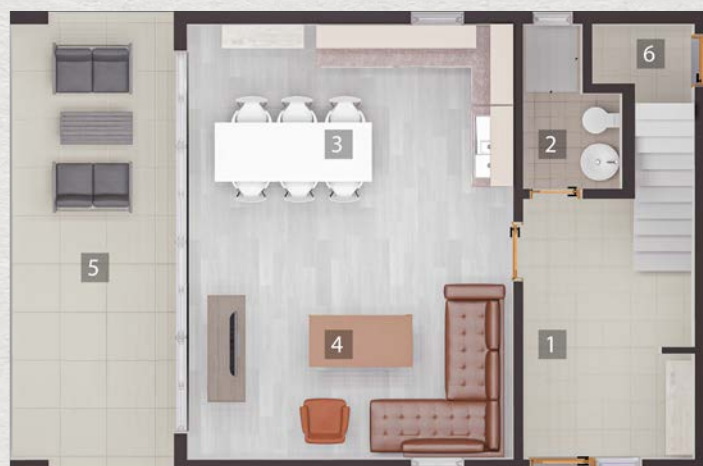
Terrace  
Teras  
16.50m<sup>2</sup>

Total Area  
Toplam Alan  
146.50m<sup>2</sup>



**steelart**<sup>®</sup>

[www.steelartmb.com](http://www.steelartmb.com)



# ST2135

2F-3BD-2BT-135

1	Entrance	Giriş Holü	7.40 m <sup>2</sup>
2	Living Room	Salon	34.00 m <sup>2</sup>
3	Kitchen	Mutfak	10.60 m <sup>2</sup>
4	M.Bedroom	Ebv.Yatak O.	18.55 m <sup>2</sup>
5	M.Bathroom	Ebv.Banyo	6.75 m <sup>2</sup>
6	WC	WC	3.40 m <sup>2</sup>
7	Terrace	Teras	14.85 m <sup>2</sup>
8	Hall	Hol	3.80 m <sup>2</sup>
9	Bathroom 2	Banyo 2	5.00 m <sup>2</sup>
10	Bedroom 2	Yatak Odası 2	12.65 m <sup>2</sup>
11	Bedroom 3	Yatak Odası 3	16.20 m <sup>2</sup>
12	Balcony	Balkon	3.25 m <sup>2</sup>

Gross Area  
Brüt Alan  
134.55m<sup>2</sup>

Terrace  
Teras  
14.85m<sup>2</sup>

Total Area  
Toplam Alan  
149.04m<sup>2</sup>

 steelart®

[www.steelartmb.com](http://www.steelartmb.com)



# ST2139

2F-4BD-3BT-OK-139

1	Porch	Giriş Terası	3.51 m <sup>2</sup>
2	Bathroom 2	Banyo 2	3.79 m <sup>2</sup>
3	Entrance	Giriş Holü	3.85 m <sup>2</sup>
4	Living Room	Salon	24.18 m <sup>2</sup>
5	Terrace	Teras	14.11 m <sup>2</sup>
6	Kitchen	Mutfak	13.69 m <sup>2</sup>
7	Bedroom 2	Yatak Odası 2	11.55 m <sup>2</sup>
8	Stair	Merdiven	3.80 m <sup>2</sup>
9	Hall	Hol	14.20 m <sup>2</sup>
10	Balcony	Balkon	7.26 m <sup>2</sup>
11	Bedroom 3	Yatak Odası 3	18.25 m <sup>2</sup>
12	Bathroom 3	Banyo 3	3.33 m <sup>2</sup>
13	M.Bedroom	Ebv.Yatak O.	15.52 m <sup>2</sup>
14	M.Bathroom	Ebv.Banyo	3.44 m <sup>2</sup>
15	Laundry	Çamaşırılık	5.98 m <sup>2</sup>

Gross Area  
Brüt Alan  
138.94m<sup>2</sup>

Terrace  
Teras  
14.11m<sup>2</sup>

Total Area  
Toplam Alan  
153.05m<sup>2</sup>

 steelart®

[www.steelartmb.com](http://www.steelartmb.com)



# ST2153

2F-4BD-3BT-153

1	Porch	Giriş Terası	5.20 m <sup>2</sup>
2	Entrance	Giriş Holü	3.47 m <sup>2</sup>
3	Kitchen	Mutfak	14.00 m <sup>2</sup>
4	Terrace	Teras	16.92 m <sup>2</sup>
5	Living Room	Salon	20.69 m <sup>2</sup>
6	Bedroom 2	Yatak Odası 2	11.69 m <sup>2</sup>
7	Hall	Hol	6.31 m <sup>2</sup>
8	Bathroom 2	Banyo 2	4.48 m <sup>2</sup>
9	Stair	Merdiven	4.95 m <sup>2</sup>
10	Hall	Hol	7.48 m <sup>2</sup>
11	Bedroom 3	Yatak Odası 3	11.69 m <sup>2</sup>
12	Bedroom 4	Yatak Odası 4	14.10 m <sup>2</sup>
13	Balcony	Balkon	7.90 m <sup>2</sup>
14	M.Bedroom	Ebv.Yatak O.	16.53 m <sup>2</sup>
15	M.Bathroom	Ebv.Banyo	4.62 m <sup>2</sup>
16	Bathroom 3	Banyo 3	4.38 m <sup>2</sup>

Gross Area  
Brüt Alan  
153.00m<sup>2</sup>

Terrace  
Teras  
16.92m<sup>2</sup>

Total Area  
Toplam Alan  
169.92m<sup>2</sup>



 steelart®

[www.steelartmb.com](http://www.steelartmb.com)



# ST2156

2F-3BD-3BT-156

1	Entrance	Giriş Holü	8.49 m <sup>2</sup>
2	Bathroom 2	Banyo 2	5.78 m <sup>2</sup>
3	Kitchen	Mutfak	18.24 m <sup>2</sup>
4	Living Room	Salon	40.88 m <sup>2</sup>
5	Hall&Stair	Hol&Merdiven	13.88 m <sup>2</sup>
6	Bathroom 3	Banyo 3	3.61 m <sup>2</sup>
7	Bedroom 2	Yatak Odası 2	15.08 m <sup>2</sup>
8	Bedroom 3	Yatak Odası 3	13.25 m <sup>2</sup>
9	Laundry	Ütü Odası	4.26 m <sup>2</sup>
10	M.Bedroom	Ebv.Yatak O.	13.31 m <sup>2</sup>
11	M.Bathroom	Ebv.Banyo	3.59 m <sup>2</sup>
12	Dressing R.	Giyinme O.	3.19 m <sup>2</sup>

Gross Area  
Brüt Alan  
155.76m<sup>2</sup>

Terrace  
Teras  
-m<sup>2</sup>

Total Area  
Toplam Alan  
155.76m<sup>2</sup>

 steelart®

[www.steelartmb.com](http://www.steelartmb.com)





# ST2167

2F-4BD-3BT-OK-167

1	Porch	Giriş Terası	4,83 m <sup>2</sup>
2	Entrance	Giriş Holü	1,77 m <sup>2</sup>
3	Hall	Hol	6,02 m <sup>2</sup>
4	Living Room	Salon	29,07 m <sup>2</sup>
5	Terrace	Teras	17,17 m <sup>2</sup>
6	Kitchen	Mutfak	12,97 m <sup>2</sup>
7	Bedroom 2	Yatak Odası 2	13,00 m <sup>2</sup>
8	Mechanical	Mekanik Oda	4,56 m <sup>2</sup>
9	Stair	Merdiven	8,00 m <sup>2</sup>
10	Bathroom 2	Banyo 2	4,85 m <sup>2</sup>
11	Hall	Hol	7,89 m <sup>2</sup>
12	Bathroom 3	Banyo 3	4,85 m <sup>2</sup>
13	Laundry R.	Çamaşır O.	3,31 m <sup>2</sup>
14	Bedroom 3	Yatak Odası 3	8,65 m <sup>2</sup>
15	Bedroom 4	Yatak Odası 4	15,39 m <sup>2</sup>
16	M.Bedroom	Ebv.Yatak O.	13,10 m <sup>2</sup>
17	Dressing R.	Giyinme O.	5,94 m <sup>2</sup>
18	M.Bathroom	Ebv. Banyo	6,71 m <sup>2</sup>

Gross Area  
Brüt Alan  
166.76m<sup>2</sup>

Terrace  
Teras  
17.17m<sup>2</sup>

Total Area  
Toplam Alan  
183.93m<sup>2</sup>



[www.steelartmb.com](http://www.steelartmb.com)



# ST2171

2F-4BD-3BT-OK-171

1	Porch	Giriş Terası	6.60 m <sup>2</sup>
2	Entrance	Giriş Holü	5.74 m <sup>2</sup>
3	Hall	Hol	5.22 m <sup>2</sup>
4	Bathroom 2	Banyo 2	7.16 m <sup>2</sup>
5	Kitchen	Mutfak	10.76 m <sup>2</sup>
6	Terrace	Teras	40.00 m <sup>2</sup>
7	Living Room	Salon	29.08 m <sup>2</sup>
8	Bedroom 2	Yatak Odası 2	13.51 m <sup>2</sup>
9	Stair	Merdiven	6.91 m <sup>2</sup>
10	Hall	Hol	5.54 m <sup>2</sup>
11	Bedroom 3	Yatak Odası 3	13.51 m <sup>2</sup>
12	M.Bathroom	Ebv.Banyo	3.10 m <sup>2</sup>
13	M.Bedroom	Ebv.Yatak O.	22.00 m <sup>2</sup>
14	Balcony	Balkon	6.75 m <sup>2</sup>
15	Bedroom 4	Yatak Odası 4	16.46 m <sup>2</sup>
16	WC	WC	2.15 m <sup>2</sup>
17	Bathroom 3	Banyo 3	5.25 m <sup>2</sup>

Gross Area  
Brüt Alan  
170.70m<sup>2</sup>

Terrace  
Teras  
40.70m<sup>2</sup>

Total Area  
Toplam Alan  
211.40m<sup>2</sup>

 steelart®

[www.steelartmb.com](http://www.steelartmb.com)



# ST2178

2F-4BD-3BT-OK-178

1	Entrance	Giriş Holü	11.23 m <sup>2</sup>
2	Bathroom 2	Banyo 2	4.23 m <sup>2</sup>
3	Stair	Merdiven	6.15 m <sup>2</sup>
4	Living Room	Salon	28.73 m <sup>2</sup>
5	Kitchen	Mutfak	14.00 m <sup>2</sup>
6	Bedroom 2	Yatak Odası 2	11.26 m <sup>2</sup>
7	Hall	Hol	8.12 m <sup>2</sup>
8	M.Bathroom	Ebv.Banyo	4.21 m <sup>2</sup>
9	M.Bedroom	Ebv.Yatak O.	20.77 m <sup>2</sup>
10	Balcony	Balkon	8.41 m <sup>2</sup>
11	Bedroom 3	Yatak Odası 3	10.65 m <sup>2</sup>
12	Bedroom 4	Yatak Odası 4	11.26 m <sup>2</sup>
13	Balcony	Balkon	3.90 m <sup>2</sup>
14	Bathroom 3	Banyo 3	4.71 m <sup>2</sup>

Gross Area  
Brüt Alan  
177.72m<sup>2</sup>

Terrace  
Teras  
-m<sup>2</sup>

Total Area  
Toplam Alan  
177.72m<sup>2</sup>



**steelart**<sup>®</sup>

[www.steelartmb.com](http://www.steelartmb.com)



\* Bu projenin tasarım ve görselleri 3 Studio Mimarlık Firması tarafından hazırlanmıştır.





# ST2180

2F-3BD-2BT-OK-180

1	Porch	Giriş Terası	4.48 m <sup>2</sup>
2	Entrance	Giriş Holü	4.74 m <sup>2</sup>
3	Living Room	Salon	30.86 m <sup>2</sup>
4	Kitchen	Mutfak	19.78 m <sup>2</sup>
5	Laundry	Çamaşırılık	4.78 m <sup>2</sup>
6	Warehouse	Depo	4.95 m <sup>2</sup>
7	Terrace	Teras	13.53 m <sup>2</sup>
8	Hall	Hol	6.22 m <sup>2</sup>
9	Stair	Merdiven	6.25 m <sup>2</sup>
10	WC	WC	3.82 m <sup>2</sup>
11	Hall	Hol	9.45 m <sup>2</sup>
12	Bathroom 2	Banyo 2	4.44 m <sup>2</sup>
13	M. Bedroom	Ebv. Yatak O.	19.88 m <sup>2</sup>
14	Dressing R.	Çiğınme Odası	6.19 m <sup>2</sup>
15	M.Bathroom	Ebv. Banyo	4.22 m <sup>2</sup>
16	Terrace	Teras	17.79 m <sup>2</sup>
17	Bedroom 2	Yatak Odası 2	14.24 m <sup>2</sup>
18	Bedroom 3	Yatak Odası 3	15.75 m <sup>2</sup>

Gross Area  
Brüt Alan  
179.50m<sup>2</sup>

Terrace  
Teras  
31.40m<sup>2</sup>

Total Area  
Toplam Alan  
210.90m<sup>2</sup>

 steelart®

[www.steelartmb.com](http://www.steelartmb.com)



# ST2340

2F-4BD-5BT-340

1	Porch	Giriş Terası	3,76 m <sup>2</sup>
2	Hall	Giriş Holü	23,09 m <sup>2</sup>
3	Cloakroom	Vestiyer	3,55 m <sup>2</sup>
4	Garage	Garaj	41,07 m <sup>2</sup>
5	Bathroom 2	Banyo 2	6,10 m <sup>2</sup>
6	Living Room	Salon	57,14 m <sup>2</sup>
7	Kitchen	Mutfak	20,47 m <sup>2</sup>
8	Terrace	Teras	13,90 m <sup>2</sup>
9	Hall	Hol	16,70 m <sup>2</sup>
10	M. Bedroom	Ebv. Yatak O.	17,90 m <sup>2</sup>
11	Dressing R.	Giyinme O.	6,70 m <sup>2</sup>
12	M.Bathroom	Ebv.Banyo	6,81 m <sup>2</sup>
13	Laundry	Çamaşır O.	5,05 m <sup>2</sup>
14	Bathroom 3	Banyo 3	6,10 m <sup>2</sup>
15	Bedroom 2	Yatak Odası 2	19,79 m <sup>2</sup>
16	Bathroom 4	Banyo 4	5,31 m <sup>2</sup>
17	Bedroom 3	Yatak Odası 3	22,15 m <sup>2</sup>
18	Bathroom 5	Banyo 5	5,07 m <sup>2</sup>
19	Bedroom 4	Yatak Odası 4	14,82 m <sup>2</sup>

Gross Area  
Brüt Alan  
340.08m<sup>2</sup>

Terrace  
Teras  
11,17m<sup>2</sup>

Total Area  
Toplam Alan  
351,25m<sup>2</sup>



 steelart®

[www.steelartmb.com](http://www.steelartmb.com)



# ST3228

3F-4BD-5BT-OK-228

1	Porch	Giriş Terası	5,55 m <sup>2</sup>
2	Entrance	Giriş Holü	4,86 m <sup>2</sup>
3	Wc	Wc	3,15 m <sup>2</sup>
4	Stair Hall	Merdiven Holü	12,73 m <sup>2</sup>
5	Kitchen & Living Room	Mutfak & Salon	42,40 m <sup>2</sup>
6	Terrace	Teras	17,11 m <sup>2</sup>
7	Stair Hall	Merdiven Holü	4,00 m <sup>2</sup>
8	Bathroom 2	Banyo 2	3,96 m <sup>2</sup>
9	Bedroom 2	Yatak Odası 2	10,10 m <sup>2</sup>
10	Bathroom 3	Banyo 3	3,50 m <sup>2</sup>
11	Bedroom 3	Yatak Odası 3	14,53 m <sup>2</sup>
12	M. Bedroom	Ebv. Yatak O.	20,45 m <sup>2</sup>
13	M.Bathroom	Ebv. Banyo	6,05 m <sup>2</sup>
14	Hall	Hol	12,73 m <sup>2</sup>
15	Employee	Görevli Odası	6,69 m <sup>2</sup>
16	Bathroom 4	Banyo 4	3,60 m <sup>2</sup>
17	Laundry	Çamaşır Odası	3,69 m <sup>2</sup>
18	Storage	Depo	3,24 m <sup>2</sup>
19	Bathroom 5	Banyo 5	4,65 m <sup>2</sup>
20	Sauna	Sauna	2,66 m <sup>2</sup>
21	Living Room 2	Salon 2	26,10 m <sup>2</sup>

Gross Area	Terrace	Total Area
Brüt Alan	Teras	Toplam Alan
228,29m <sup>2</sup>	17,11m <sup>2</sup>	245,40m <sup>2</sup>

 steelart®

[www.steelartmb.com](http://www.steelartmb.com)



# ST3235

2.5F-5BD-5BT-235

1	Entrance	Giriş Holü	2.98 m <sup>2</sup>
2	Hall	Haol	7.57 m <sup>2</sup>
3	Living Room	Salon	24.67 m <sup>2</sup>
4	Bedroom 2	Yatak Odası 2	11.23 m <sup>2</sup>
5	Bathroom 2	Banyo 2	4.75 m <sup>2</sup>
6	Bathroom 3	Banyo 3	3.50 m <sup>2</sup>
7	Bedroom 3	Yatak O. 3	14.63 m <sup>2</sup>
8	Terrace	Teras	26.32 m <sup>2</sup>
9	Kitchen	Mutfak	11.66 m <sup>2</sup>
10	Stair	Merdiven	6.27 m <sup>2</sup>
11	Hall	Hol	8.56 m <sup>2</sup>
12	Bedroom 4	Yatak Odası 4	9.42 m <sup>2</sup>
13	Bedroom 5	Yatak Odası 5	9.66 m <sup>2</sup>
14	Bathroom 4	Banyo 4	3.83 m <sup>2</sup>
15	M.Bathroom	Ebv.Banyo	3.23 m <sup>2</sup>
16	M.Bedroom	Ebv.Yatak O.	15.65 m <sup>2</sup>
17	Balcony	Balkon	6.55 m <sup>2</sup>
18	Mechanical	Mekanik Tes.	9.23 m <sup>2</sup>
19	Warehouse	Depo	40.68 m <sup>2</sup>
20	Bathroom 5	Banyo 5	7.23m <sup>2</sup>

Gross Area  
Brüt Alan  
234.63m<sup>2</sup>

Terrace  
Teras  
26.32m<sup>2</sup>

Total Area  
Toplam Alan  
260.95m<sup>2</sup>



 steelart®

[www.steelartmb.com](http://www.steelartmb.com)



Architech Multiprofil Rollform | Architech Multi-profile Rollform



SFS Multiprofil Rollform | SFS Multi-profile Rollform



CNC Kontrollü Boru Kesmeli Plazma | CNC Controlled Plate and Tube Cutting Machine



CNC Kontrollü Tam Otomatik Entegre Profil İşleme Hattı (Hat boyu 60m)  
Full automatic CNC Controlled Profile Processing Line – Conveyor lines



CNC Kontrollü Plaka Delik Delme Makinesi  
Full automatic CNC Controlled Plate Drilling Machine



CNC Kontrollü Çift Köprülü Plazma  
CNC Controlled 2 Bridges Plate Cutting Machine



CNC Kontrollü Abkant Pres  
CNC Controlled Press Brake





**SETAP**  
ÇELİK YAPI ÇÖZÜMLERİ  
STEEL CONSTRUCTION SOLUTIONS

**ENDÜSTRİYEL YAPILAR**  
INDUSTRIAL BUILDINGS

**ÇOK KATLI ÇELİK YAPILAR**  
MULTI STOREY STEEL STRUCTURES

**DEPO/HANGAR**  
WAREHOUSES/HANGARS

**ENERJİ YAPILARI**  
POWER & ENERGY STRUCTURES

**TİCARİ YAPILAR**  
COMMERCIAL BUILDINGS

**SOSYAL YAPILAR**  
SOCIAL BUILDINGS

**SPOR SALONLARI**  
SPORTS BUILDINGS

**ÖZEL ÇÖZÜMLER**  
SPECIAL SOLUTIONS



AIBD International Airport - Senegal



Dakar Arena - Senegal



Trabzon Otobüs Terminali



15 Temmuz Köprüsü Karakol Binası



Gen İlaç Tesisleri - Ankara



Cenal Tesisleri - Çanakkale



e-Park Tower - Almanya



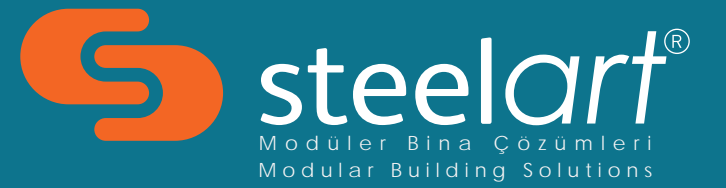
Maya Tekstil - Sakarya




Kintele Congress Center - Kongo




Petronas Kamp Tesisleri - Malezya





Headquarters | Merkez Ofis

 Kaynarca Mah. Çeşni Sok. No:5/4 34890 Pendik-İstanbul / Türkiye

 +90 216 375 03 30

Factory | Fabrika

 Büyükesence Mah. D-100 Yanyol No:267 54200 Erenler-Sakarya / Türkiye

 +90 264 291 42 10

 [www.steelartmb.com](http://www.steelartmb.com)

